



—
Cover:
Monument à la gloire des héros
By: Lorenzo Tiepolo
—

Letter by: Yazoka.com
—



290 square meters letters

With autumn knocking on our door we have a couple of special treats for you.

Great pieces from Adam Kimmel for Carhartt, the APC Femme Autumn collection and finally a space pen that writes upside down. We'll make up for lost letters and keep you posted on our new autumn winter 2011 arrivals.

See you round,

ido



Denim moleskin

New York Designer Adam Kimmel and Carhartt, the family owned Dearborn, Michigan based clothing brand are partnering on a new co-branded menswear collection.

The Adam Kimmel Carhartt collection will include sweats, jackets and accessories designed and conceived by Kimmel, who has been wearing Carhartt since childhood.

For more than a century, Carhartt has been a go to American work wear brand and this new collection dialogues between Kimmel's luxury utilitarian aesthetic and Carhartt's long history in American industry. Newly engineered Adam Kimmel Carhartt textiles such as denim moleskin and plaid flannels are featured in the collection in deep blue, black and indigo.



We're very proud to present this collection exclusive to the Netherlands at 290 square meters.



A.P.C. femme

Founded by Mr Jean Touitou in 1987, A.P.C. (which stands for Atelier de Production et de Création) was born from a reaction against the ostentatious fashion that was all the rage in Paris at the time. With a belief that clothes should not overshadow the personality of the wearer, A.P.C. quickly became renowned for its simple, well-tailored wardrobe staples, inspired by workwear and free from embellishment.

In the shop we have a great selection for men and women.



We are Bookman

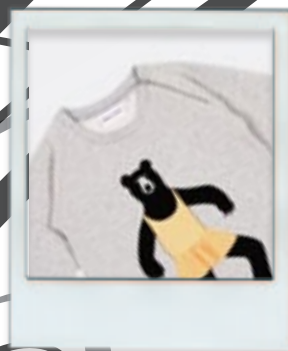
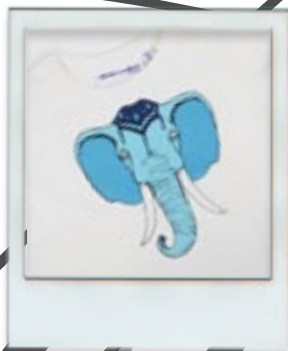
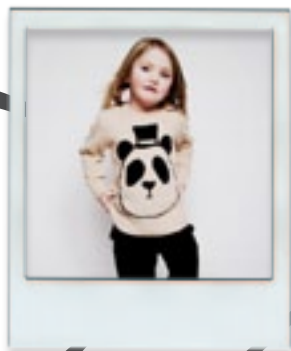
a Stockholm based company that makes accessories for bicycles and the people on them. Minimalistic but playful. Biking is the number one way for Swedes to get around, but the majority is riding in the dark. What started as a small scale social project rapidly grew into a nationwide concept. Bookman Light, is now available in 4 colors in Amsterdam at 290 square meters for € 20,-



Loopwheeler x Clarks

Japanese label Loopwheeler has combined with shoe manufactures Clarks to create this collaborative capsule collection. Working on the Desert Boot and Wallabee models, each features a two-tone colorway. Each shoe utilises Loopwheeler, Loopwheeler fabric, and black suede as well as thick natural rubber soles. Branding for the fall/winter release is restricted to the contrasting blue insoles which are made from a thick material for added comfort





Circus King

Mini Rodini was founded in 2006 by the Swedish illustrator Cassandra Rhodin.

Inspired by her great grandfather, the legendary circus king Brazil Jack, she has created a new take on children's wear, expressing their own creativity and humour. With sustainability and quality in focus, Mini Rodini creates clothes that parents want to dress their kids in, and that kids love to wear. Today, Mini Rodini is represented in over 200 locations around the world.

Nike Zoom All Court II

Hiroshi Fujiwara has a long history of collaborative efforts with Nike, both through his fragment design and with Tinker Hatfield and Mark Parker on the HTM project. This Nike Zoom All Court 2 is a fragment design shoe and available in 3 colors.





M . O . M . A .

The original Fisher Bullet Pens were designed almost 60 years ago, in 1948 to be exact. The Fisher bullet shaped pen is the most popular Fisher Space Pen today. Because of its shape and size it fits perfectly in your pocket and you can always carry it with you. All of the Fisher Bullet Pens are gift boxed and use a #PR4 black ink (medium point) pressurized Fisher Space Pen refill. When opened the Fisher Bullet Pens measure 13,5 cm with a closed length of 9,40 cm.

Did you know that the Fisher Bullet Pens have been exhibited for years in the New York Museum of Modern Art?

Often imitated, never duplicated!



[Ouuhr, ou-er] [Leg-uh-see]

With 'Impressions' for this Autumn Winter and last season's 'Observations', there's an almost academic and philosophic approach to clothes; these pieces will not go out of fashion because they never were fashion. They might be part of a style, but it'll always be the style of the wearer, not the brand.

In menswear especially, it is key for brands to find the balance between style, affordability, quality and wearability. A subtle and earthy colour palette on top of that and you're good to go.

Our Legacy delivers on all accounts, creating a brand that, if anything, encapsulates a lifestyle more than just a style.



Elegance for progressive women

Carin Rodebjer lives and works in New York. When she first moved to New York and started studying at F.I.T (Fashion Institute of Technology) she was fully charmed by the fashion scene and the inspirations it provided. Her design philosophy is based on wardrobe essentials in combination with items catching the zeitgeist.

Carin Rodebjer: Our passion is distinct silhouettes and the feel, weight and drape of the fabric. We design for the modern and universal woman who is not defined by borders. She is vibrant and confident. She believes in inner as well as outer style. Rodebjer defines effortless elegance for progressive women.



Aged in the wood

Together with Medicom's FABRICK division Wood Wood has created a luxurious crafted accessory line. All pieces are made in very limited numbers and will be sold exclusively in a few handpicked stores worldwide. We are one of them.

290 square meters

Houtkopersdwarsstraat 3

1011 NK Amsterdam

+31 20 419 25 25

www.290sqm.com

info@290sqm.com

Tuesday - Saturday 11:00 - 18:00

Online boutique

www.thefoundation.nl